



**LOCUS ENGINEERING MANAGEMENT AND SERVICES CO. W.L.L**



### PROFILE SUMMARY

S#	CONTEXT	PAGE NO.
1	MANAGEMENT MESSAGE	3
2	COMPANY OVERVIEW	4
3	EITHICAL VALUES	5
4	SERVICES PORTFOLIO	6 - 8
5	ORGANISATION STRUCTURE	9
6	OUR TEAM	10
7	LIST OF CLIENTS	11
8	PROJECTS	12
9	WHY CHOOSE US	13 - 14



## MANAGEMENT MESSAGE

**Locus Engineering Management & Services Co. W.L.L.** proudly continues to optimize its legacy of multi-disciplinary expertise encompassing project management solutions, cleaning and hospitality management, manpower support services, building construction and design-build projects, Oil and Gas Drilling associated services...etc.

We have humble beginnings as a support services company in India and Middle East under various international clients, constantly understanding their requirements and establishing a reputation as a trusted service provider.

Today, thanks to our legacy and committed team of highly experienced engineers and project support management team, we have diligently contributed to the existing and upcoming sectoral frontiers both as a guide and innovator. Our ultimate goal is to redefine trust and quality in new-age project management solution. Through this endearing journey of ups and downs, profit has just been a positive outcome of our commitment to serve our respective clients and never a pillar.

We as a company assure all our esteemed clients, stakeholders and well-wishers our continued support and services as we usher in the next stage of evolution in this new era of business.



## COMPANY OVERVIEW

**Locus Engineering Management and Services Co. W.L.L (LEMS)** offers comprehensive Engineering & contacting solutions to customers in various industries through a portfolio of established manufacturers and service providers, complemented by a global team of experts with decades of engineering, service contracting and management experience. Our customers are asset owners and operators within key sectors of the industry. We provide a complete range of offerings, from individual products and services to integrated end-to-end management solutions. We employ the industry's latest technologies and processes to provide the entire suite of solutions to our customers as they seek to improve the efficiency of their asset ownership and operations. At LEMS, we are continuously expanding our portfolio in order to become the world's preferred integrated solutions provider of engineering, maintenance and project management services.

### OPERATIONS

With the team of 250+ staff (Onshore + Offshore), we employ highly skilled individuals for every service level as it plays a pivotal role in adding Locus's Legacy.

### PROJECT MANAGEMENT

An integrated team approach guarantees strategic project planning and management across our range of services in Qatar.

### SAFETY VALUES

Locus Engineering deeply cares about safeguarding the health and well-being of its employees where we hold safety paramount.

### STRATEGY

Our team identifies challenges in a timely manner and overcomes them with cutting edge solutions that befits the project's budget and schedule.



## ETHICAL VALUES

### MISSION STATEMENT

Locus Engineering's Mission is to be recognized by customers as a World Class Project Management and Engineering services provider, safely conducting our operations with true care for each other, our clients and the environment.

### OUR MISSION

To achieve our mission, we will:

- Work Safely,
- Work efficiently
- Work Sustainably
- Adopt cost effective technology
- Continuously improve performance, and
- Add value to everything we do.

### OUR VALUES

We perform our Work with:

- Constant Care and Compassion,
- Integrity
- Creativity
- Teamwork
- Law abidance and
- Respect of diversity.



## SERVICES PORTFOLIO

Portfolios	Functions
<b>Civil &amp; Engineering Section</b>	<p>LOCUS Engineering aims to build and develop more than just great properties. We want to create lasting relationships. To us, every new project is an opportunity to build new bonds and reinforce relationships. We may work most often with concrete, steel and glass, yet our best work is derived of confidence, quality and pride in the work we do and those we work with. Being a General Contracting company, our activities are Construction of Turnkey Projects, Supply &amp; Erection of Pre-Engineering Building, Aluminum &amp; Structural Glazing, False Ceiling &amp; Decoration Works, Maintenance Works, Water Proofing Works &amp; Roofing Works, Scaffolding, Painting Works etc.</p>
<b>Bore Hole &amp; Earth Operations</b>	<p>As a part of expanding operations, through our strategic partners we have a segment for bore hole and drilling division where we have executed number of deep hole injection &amp; water well drilling projects associated with HRB group for the last 4 years.</p> <p>Activities are: • Earthing and Lighting Holes • Soak away Holes • Anode Holes • Dewatering Wells • Monitoring Wells • Injection Wells • Concrete Coring Machine.</p>



Portfolios	Functions
<b>Manpower Support Function</b>	Our project support divisions have diverse set of workforces ranging skilled, semi-skilled and professional manpower
<b>Hospitality Management</b>	Following the long standing Middle Eastern culture of serving guests with tea or coffee, we have perfected the 'art' and provided our valued clients with exceptional hospitality services: <ul style="list-style-type: none"><li>✓ Provision of Tea Girl / Tea Boy Services.</li><li>✓ Provision of Receptionist Services.</li><li>✓ Event Services – Large and Small.</li></ul>
<b>Engineering Consultancy</b>	<p>Through our joint venture group, we support all project design and management needs, our CAD Department deploys the latest AutoCAD releases and associated architectural, structural, MEP and civil engineering design software on 20 workstations. With a fully trained complement of CAD technicians and engineers, a comprehensive library of standard details, and the ability to program task specific Auto-Lisp routines, LOCUS can quickly and efficiently produce contract drawings.</p> <ol style="list-style-type: none"><li>1. Building Permit Processing</li><li>2. Landscaping Design</li><li>3. Building Services Design</li><li>4. Construction Supervision</li><li>5. Health &amp; Safety</li><li>6. Records</li><li>7. Architectural Building Design</li><li>8. Interior Design</li><li>9. Structural Design</li><li>10. Civil Engineering Design</li><li>12. Project Management</li><li>11. Quality Control</li><li>13. Review of Contractor's proposals</li></ol>

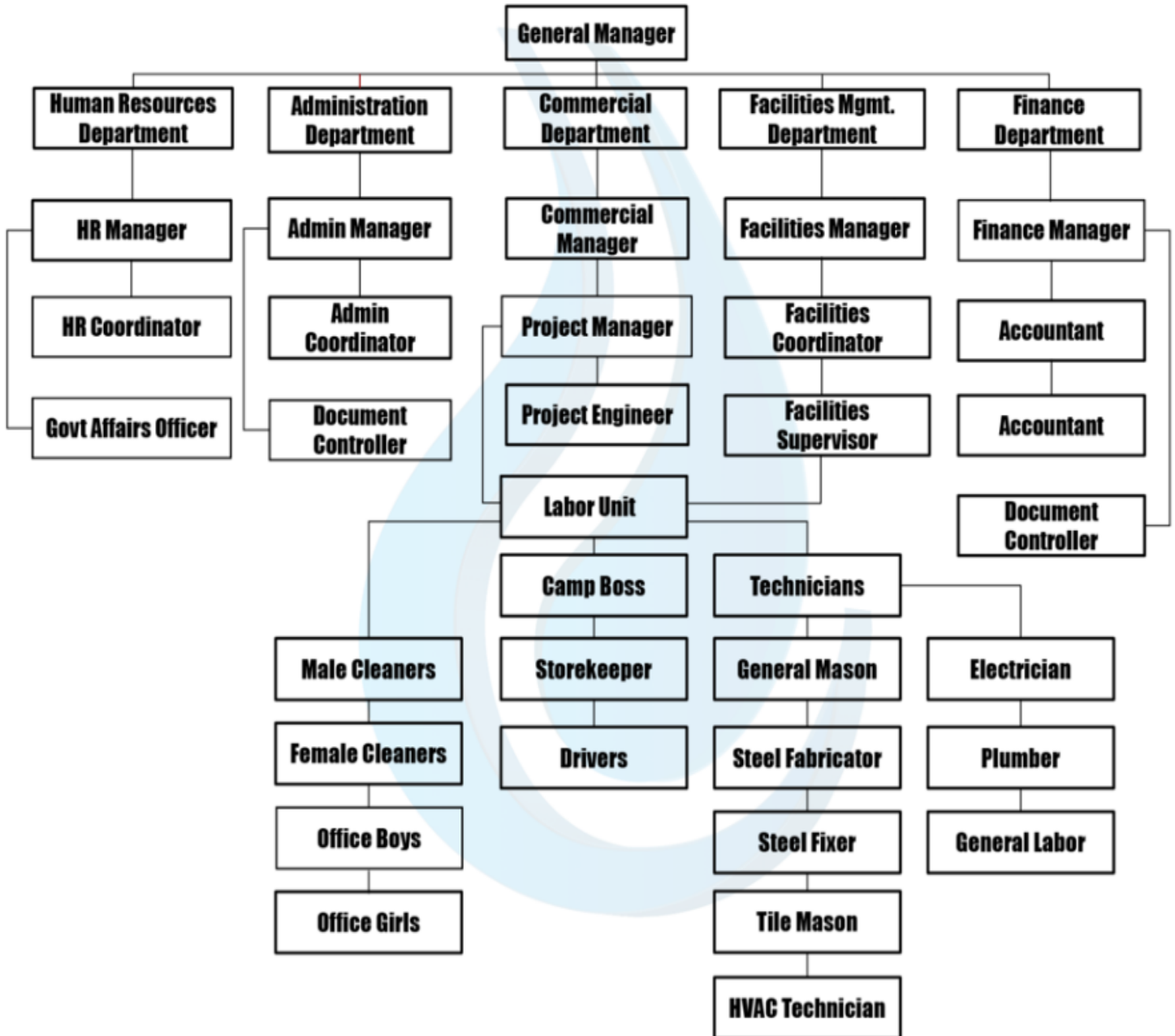


Portfolios	Functions
<b>Comprehensive Building Maintenance</b>	<p>Renovate, Improve and Modernize existing HVAC systems, Preventative Maintenance, Service and Repair existing systems. Furthermore, we provide maintenance services for Fire Alarm, Fire Fighting and detection systems for buildings. We have skilled manpower for carrying out various building maintenance and support services to our EPIC - Construction and Oil and gas clients.</p>
<b>Waste Management Services</b>	<ul style="list-style-type: none"><li>✓ Domestic, non-domestic and hazardous waste removal and transportation.</li><li>✓ Grit and dry sludge removal and transportation.</li><li>✓ Oily waste and chemical waste removal and transportation.</li><li>✓ Sewage water, wet sludge and rain-water removal and transportation.</li><li>✓ Tank cleaning, manhole cleaning, pipeline cleaning and network blockage clearance.</li><li>✓ Other sewerage and cleaning services by high pressure jetting machine and super sucker.</li><li>✓ Manufacturing of any size skips and containers in own factory.</li><li>✓ Supply of drinking water</li></ul> <p><b>List of Equipment's</b></p> 





## Organization Structure





## OUR TEAM

We create an atmosphere that motivates & inspires the team, enabling them to deliver effectively to our clients. All our achievements and accomplishments would not have been possible without our highly motivated employees who strive towards attaining our shared values and objectives.

### ENERGY & EXPERTISE

Behind every successful organization, there is a team of diverse and talented individuals. Our employees represent a sound mixture of highly motivated young professionals and experienced specialists, together form “The Alloy of our Success”.

### PEOPLE SYNERGY

Simply stated, synergy results when “the whole is greater than the sum of its parts.” At Locus Engineering Qatar, we bring together the individual capabilities such that their cumulative performance is higher than that of the sum of their individual output.

### CORPORATE CULTURE

The core of our culture is to understand our client’s requirements and take great pride in catering to their needs. We strongly realize that the best ideas develop as a result of collaborative efforts between individuals with diverse background, opinions and perspectives. The organization is mindful of its responsibilities to promote equal opportunities and to avoid discrimination at all times. We value the diversity and multicultural background and demonstrate mutual trust and respect for one another.

### CUSTOMER FIRST

“Customer focus” is not a slogan”; it’s our way of doing business. The main priority for our organization is to take care of each client and each project while maintaining a commitment to excellence. This is achieved by maintaining a highly motivated team.



لوكس انجنيئرنگ للخدمات والاداره د  
Locus Engineering Management & Services Co. W.L.L

## LIST OF CLIENTS





## PROJECTS

S#	Project Description	Clients	Contract Value (QAR)	Status
1	Various Projects in Qatar	Al Ali Trading and Contracting Co.	249,560	ongoing
2	Building Maintenance Services in GDI Head Office on Call off basis	Gulf Drilling International Ltd	48,000.00	Ongoing
3	Various Projects In Qatar	H.R.B	20,000,000	ongoing
4	On Call Project	Schlumberger	40,000,000	ongoing
5	Emergency Project	Schlumberger	25,000,000	ongoing
6	Supply of General Consumables on Call off Basis	Gulf Drilling International Ltd	175,000.00	ongoing
7	Drilling of boreholes for earthing at Al Hilal	Al Bandary Engineering Trading & Contracting W.L.L	147,200	completed
8	Drilling of boreholes for dewatering at al wajba palace	Al Ali Engineering Co. W.L.L	24,600	completed
9	Drilling of boreholes for earthing at jamilyyah	Marbu Contracting Co. WLL	62,500	completed
10	Drilling of boreholes for earthing at al wakhra terminal	Urbacon Trading & Contracting	15,780	completed
11	Drilling of boreholes for earth pits excavation	Zenith Electro-Mechanical Contracting	55,000.00	completed
12	Drilling of boreholes for earthing at katara for kharama	Hamood al Rashidi & Bro. Trad.	29,605.00	completed
13	Drilling of boreholes for earthing at south - east car park education city	Shapoorji Pallonji Qatar Wll	38,200.00	completed
14	Drilling of boreholes for water well and soak away at Ashghal package 6 school	Imperial Trading & Contracting	450,000.00	completed



## WHY CHOOSE US

### APPROACH

Our strong sense of identification with client projects means that we are constantly striving to provide solutions, even for issues they aren't yet aware of. To this end, we adopt a progressive approach to technology and marketing techniques.

### BINDING SAFETY AND QUALITY

We package safety and quality to work scope. Our priority is to provide the best quality materials and services at the most effective manner.

### GLOBAL KNOW HOW

Our strong sense of identification with client projects means that we are constantly striving to provide solutions, even for issues they aren't yet aware of. To this end, we adopt a progressive approach to technology and marketing techniques.

### DEFINING CONTINUITY

Our strong sense of identification with client projects means that we are constantly striving to provide solutions, even for issues they aren't yet aware of. To this end, we adopt a progressive approach to technology and marketing techniques.



# لوکس انجینئرنگ للخدمات والاداره د

## Locus Engineering Management & Services Co. W.L.L

**FEEL FREE TO CONTACT US AT THE FOLLOWING ADDRESS**

Al Muntazah Trading Center  
Building No.1 – Floor 1, Office 05-13  
Doha – State of Qatar  
Mobile: +974 55548644  
Mobile: +974 50745366  
Website: [www.locusengg.com](http://www.locusengg.com)  
Email: [gm@locusengg.com](mailto:gm@locusengg.com)

Google Link: <https://goo.gl/maps/vLtNk9y6mDKAPVdC6>

